

THE TRUCKERS

SH 100 - SH 105 - SH 110 - RH 100



THE TRUCKERS

SH 100 - SH 105 - SH 110 - RH 100

petlas
TRACK OF TRUST

SH 100

SH 100 pattern is suitable to use on all axles on buses and at steer or non-powered second axle on trucks. Tread pattern geometry is optimized to deliver steering and grip on wet roads. Exceptional carcass structure provides outstanding braking performance.

ALL SIZES

INDEX

245/70 R19.5	136/134M
265/70 R19.5	140/138M
285/70 R19.5	146/144L (145/143M)
295/80 R22.5	152/148M
315/80 R22.5	154/150M (156/150L)



PATTERN PROPERTIES



Computer designed tire profile and block arrays offer safe and balanced driving.



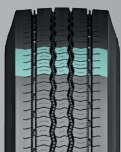
Excellent carcass structure is suitable for retreading several times.



Optimised tread design provides resistance against irregular wear by balancing the pressure equally under load.



Offers excellent grip and short braking distance with numerous sipes and z-shaped circumferential blocks.



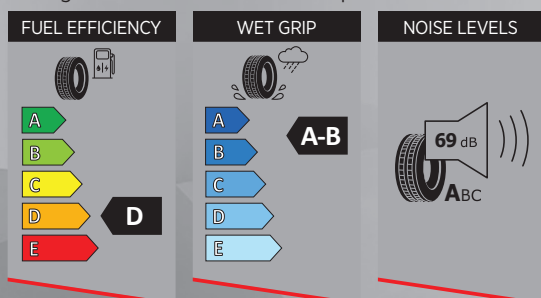
Special tread compound and robust structure ensure longevity and economic fuel consumption.



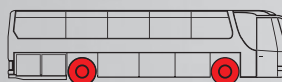
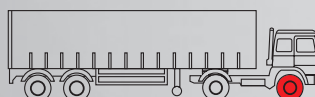
Circumferential grooves discharge water quickly and efficiently.

EU LABEL

Average values from all sizes of this specific model.



POSITION / APPLICATION



SH 105

SH 105 is a steer pattern that is designed for trucks. It provides comfort and maneuverability for a balanced drive on asphalt roads. Wide tread area and multi dimensional sipes improve mileage and enhance traction. Offers outstanding grip on both wet and dry roads.

ALL SIZES

11 R22.5

12 R22.5

INDEX

148/145M

152/148M



PATTERN PROPERTIES



Wide shoulder blocks provide lateral balance and a smooth drive.



Circumferential grooves drain water quickly and efficiently.



Indented sides of the blocks provide safe brake distance even if the tire is worn.



Optimized tread design provides resistance against irregular wear by balancing the pressure equally under load.



Special tread compound and robust structure ensure longevity and economic fuel consumption.



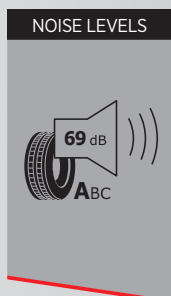
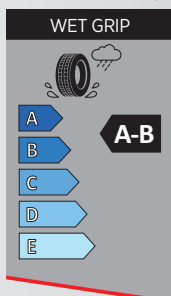
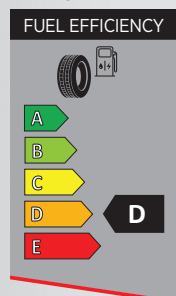
Medium density sipes provide superior handling and decrease braking distance.



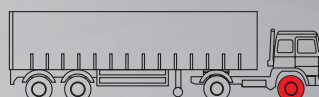
Excellent carcass structure is suitable for retreading several times.

EU LABEL

Average values from all sizes of this specific model.



POSITION / APPLICATION



SH 110 PROGREEN

SH 110 PROGREEN is suitable to use on all axles on buses and at steer or non-powered second axle on trucks. Special tread pattern design ensures even wear throughout the tyre's lifespan. Multiple grooves allow fast water discharge and provide exceptional wet handling on asphalt roads. Wide tread area and multi dimensional sipes improve mileage and enhance traction. Offers outstanding grip on both wet and dry roads.

ALL SIZES

285/70 R19.5
285/70 R19.5
295/60 R22.5
295/80 R22.5
315/60 R22.5
315/70 R22.5
315/80 R22.5
385/65 R22.5

INDEX

146/144L
150/148J
150/147L
152/148M
154/150L
156/150L
154/150M
164K



PATTERN PROPERTIES



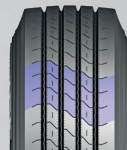
Optimized tread pattern improves resistance against irregular abrasion by distributing pressure equally under load.



Computer designed tire pattern and five circumferential ribs ensure a balanced and comfortable drive.



Numerous sipes on the ribs enable exceptional grip.



Special tread compound and robust structure enhance efficiency of fuel consumption and improves longevity.



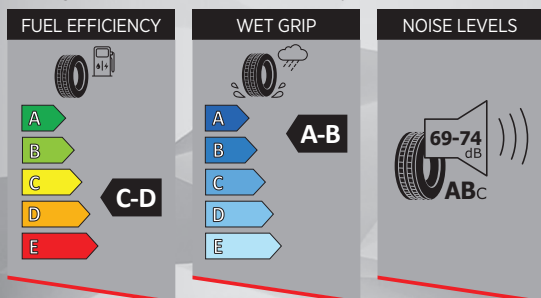
Circumferential grooves provide quick and efficient water discharge.



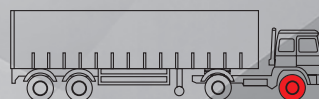
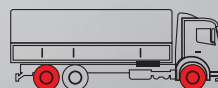
Exceptional carcass structure is suitable for retreading.

EU LABEL

Average values from all sizes of this specific model.



POSITION / APPLICATION



RH 100

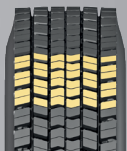
RH 100 is a drive axle pattern designed for busses and trucks. Provides exceptional traction on asphalt roads. Block array decreases wear and increases wet grip. Optimized tread profile provides resistance against irregular wear under heavy loads. Delivers a safe drive and extended mileage in demanding winter conditions. Suitable for retreading.

ALL SIZES INDEX

11 R22.5	148/145M
12 R22.5	152/148M
265/70 R19.5	140/138M
285/70 R19.5	146/144L
295/60 R22.5	150/147L
295/80 R22.5 Plus	152/148M
315/60 R22.5	152/148L
315/70 R22.5	154/150L
315/80 R22.5	154/150M



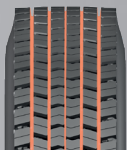
PATTERN PROPERTIES



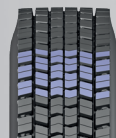
Optimized tread design provides resistance against irregular wear by distributing the pressure equally under load.



Reinforced interconnected blocks and carefully arranged block array improve driving balance.



Circumferential and lateral grooves drain water quickly and efficiently.



Block array structure provides high traction by generating numerous road adherence points on asphalt in any kind of weather conditions.



Special tread compound and robust structure ensure longevity and enhance fuel efficiency.



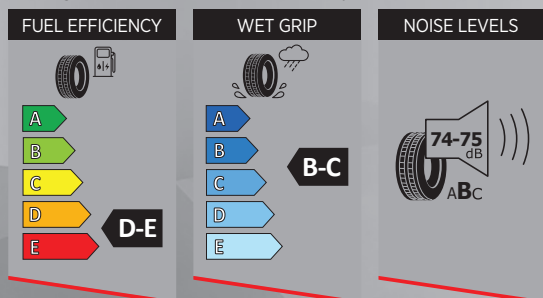
Excellent carcass structure is suitable for retreading.



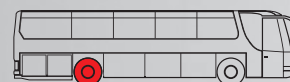
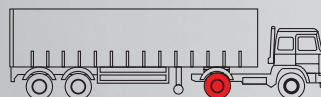
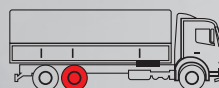
Optimized tread depth increases the tire's lifespan.

EU LABEL

Average values from all sizes of this specific model.



POSITION / APPLICATION



THE TRUCKERS

SH 100

SH 105

SH 110
PROGREEN

RH 100



「 MORE DURABLE AND RETREADABLE TIRE
IMPROVED ROAD STABILITY, EXCELLENT
HANDLING AND SUPERIOR GRIP 」

petlas
TRACK OF TRUST

Headquarters - Factory

Petlas Tire Industry and Trade
Kindam Mahallesi Ankara - Kayseri Caddesi
No: 2/1 Kırşehir / TÜRKİYE
T: +90 386 252 65 50 • F: +90 386 252 65 70

Int. Sales & Marketing

Petlas Tire Industry and Trade
Ako Kule, Söğütözü Mh. 2178. Cad. No: 6
06530 Ankara / TÜRKİYE
T: +90 312 309 30 30 • F: +90 312 309 22 66

Petlas Tire USA

1111 E. Lincolnway STE 205
Cheyenne, WY 82001 USA

www.petlas.com

MADE IN TÜRKİYE