

**petlas**

TRUCK & BUS (TBR) TIRES

TRUCK & BUS (TBR) TIRES

SH100

ULTIMATE COMFORT, QUITE RIDE

SH105

LONG LIFE, EXCEPTIONAL GRIP

SH110  
PROGREEN

BALANCED DRIVE, SUPREME MANEUVRABILITY

### Petlas Truck & Bus (TBR) Tires

Petlas Truck & Bus (TBR) Tires are characterized by quality workmanship, leading edge technology, unique tread designs and excellent performance offering perfect mix of quality and value.

S H 1 0 0

LONG LIFE AND ULTIMATE GRIP WITH  
DURABLE STRUCTURE AND SPECIAL PATTERN

2018 EDITION

TRACK OF TRUST



**petlas**

### Headquarters - Factory

Petlas Tire Industry and Trade  
Kırşehir - Kayseri Devlet Yolu Üzeri  
Göhlisar Mevkii 7. km Kırşehir / TURKEY  
T. +90 386 252 65 50 F.+90 386 252 65 70

### Int. Sales & Marketing

Petlas Tire Industry and Trade  
Kazım Karabekir Cd. Özcan Plaza  
No.124 Ankara / TURKEY 06050  
T. +90 312 309 30 30 F.+90 312 310 95 09

### Petlas Tire USA

1111 E. Lincolnway STE 205  
Cheyenne, WY 82001 USA  
www.petlas.com

MADE IN TURKEY

TRUCK & BUS (TBR) TIRES

SH100 | SH105 | SH110 PROGREEN

**petlas**  
TRACK OF TRUST

# SH100



SH100 designed for trucks and buses. Delivers balanced driving, perfect comfort and supreme maneuverability on highway. Resistant against irregular wear. Long life and ultimate grip with durable structure and special pattern. Provides safe brake distance with Z-shaped grooves. Fits for retreading multiple times thanks to its carcass structure.

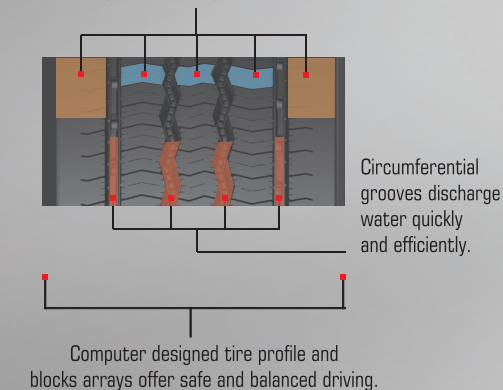
## ALL SIZES

## INDEX

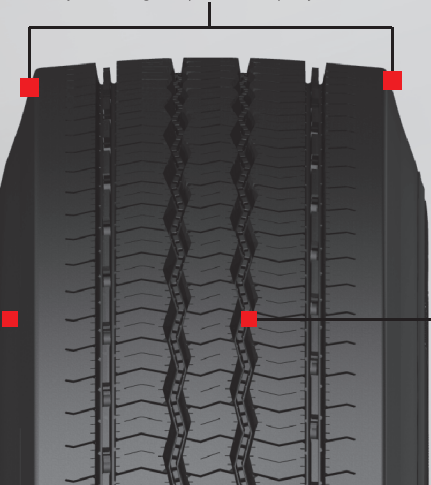
295/80 R22.5	152/148 M
315/80 R22.5	154/150 M (156/150 L)

### TECHNICAL HIGHLIGHTS

It offers excellent grip and short breaking distance with numerous sipes and z-shaped circumferential blocks.



Optimised tread design resistance against irregular wear by balancing the pressure equally under load.



Special tread compound and robust structure provide longevity and economic fuel consumption

# SH105



It is a steer tire specially been developed for trucks. With its specific tread pattern and durability, it enhances the longevity and exceptional handling. Special front axle tire for trucks and busses. Balanced drive, amazing comfort, ultimate grip and maneuverability on asphalt surfaces. Resistant against irregular wear with equal pressure distribution thanks to its optimized pattern profile.

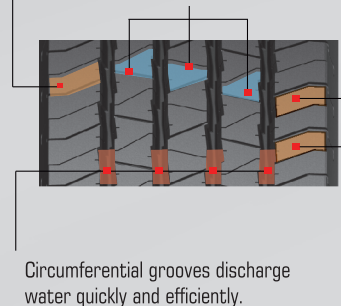
## ALL SIZES

## INDEX

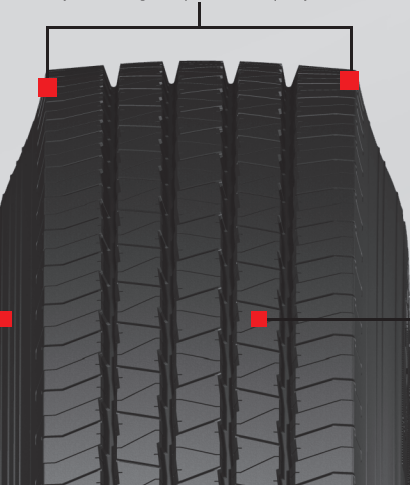
11 R22.5	148/145 M
12 R22.5	152/148 M

### TECHNICAL HIGHLIGHTS

Wide shoulder blocks provide lateral balance and enhance a smooth driving  
Medium density sipes provide superior handling and short brake distance



Optimised tread design resistant against irregular wear by balancing the pressure equally under load.



Special tread compound and robust structure provide longevity and economic fuel consumption

# SH110

PROGREEN



SH110 PROGREEN steer tire is produced for trucks and busses, and maintains balanced driving on highway, as well as comfort and outstanding maneuvering capability. Water discharge and ultimate grip on wet surfaces with five circular blocks and four circular canals. Balanced and comfortable drive with computer designed tire profile and block array. Resistant to irregular wear under heavy loads with optimized tread profile.

## ALL SIZES

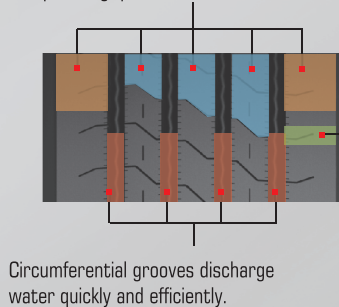
## INDEX

295/80 R22.5	152/148 M
315/80 R22.5	154/150 M (156/150 L)
315/70 R22.5*	

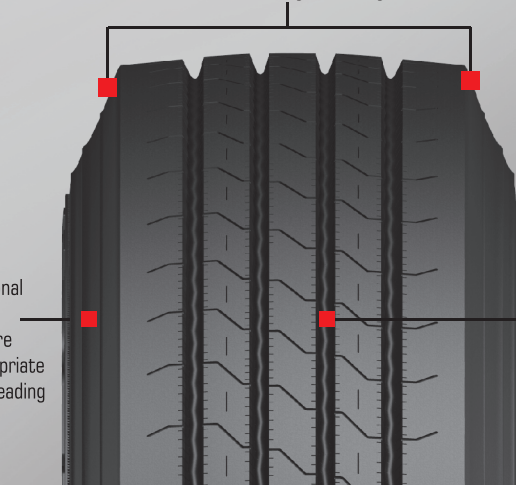
\*UNDER DEVELOPMENT

### TECHNICAL HIGHLIGHTS

Circumferential ribs with numerous sipes enables exceptional grip.

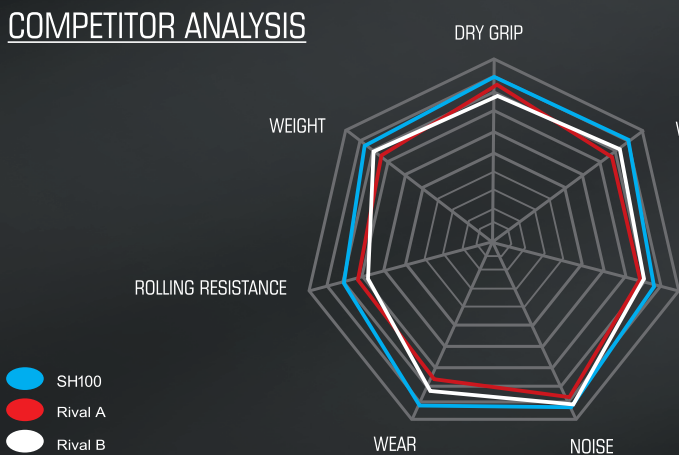


Optimised tread pattern maintains equal pressure distribution underload which enables resistance against irregular abrasion.



Special tread compound and solid structure provides durability and fuel consumption

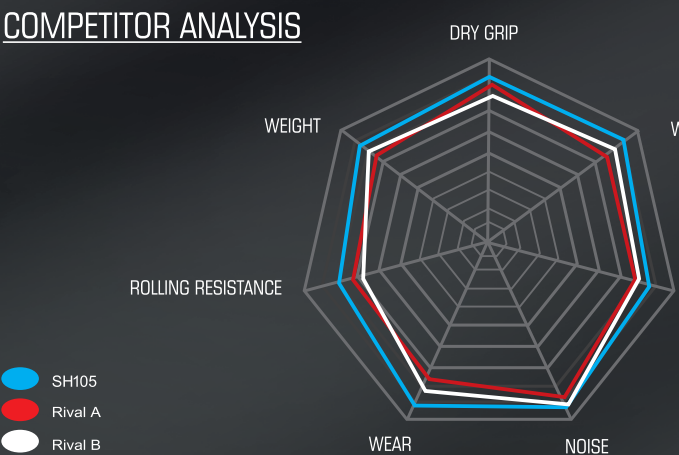
### COMPETITOR ANALYSIS



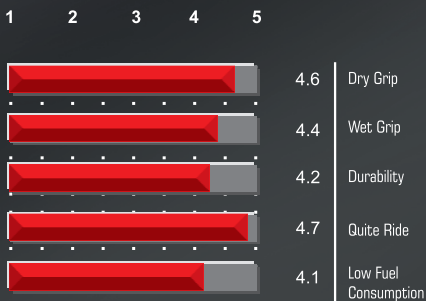
### PERFORMANCE RATINGS



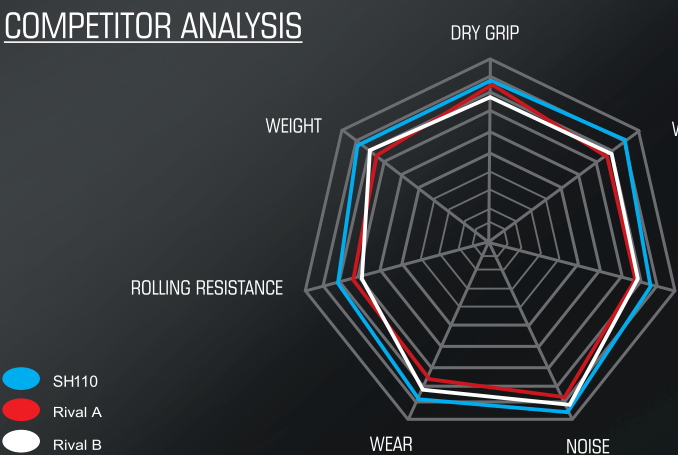
### COMPETITOR ANALYSIS



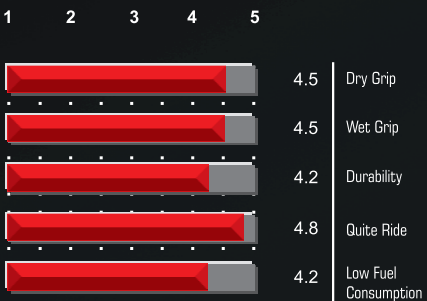
### PERFORMANCE RATINGS



### COMPETITOR ANALYSIS



### PERFORMANCE RATINGS



**EU LABEL**  
Average values from all size, on this specific model

Wet Grip: D

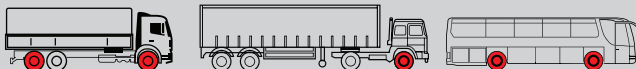
Wet Braking: A

Noise: 72 db

EU label figures are valid for the tires produced after December 15, 2017



### POSITION / APPLICATION



**EU LABEL**  
Average values from all size, on this specific model

Wet Grip: C

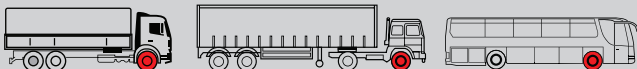
Wet Braking: A

Noise: 70 - 72 db

EU label figures are valid for the tires produced after December 15, 2017



### POSITION / APPLICATION



**EU LABEL**  
Average values from all size, on this specific model

Wet Grip: C

Wet Braking: A

Noise: 71 - 72 db

EU label figures are valid for the tires produced after December 15, 2017



### POSITION / APPLICATION

