



petlas

MILITARY & LTB - TBB TIRES

petlas
TRACK OF TRUST



Premium Quality Military, LTB & TBB Tires

NOTICES & DISCLAIMER

- For load capacity and inflating pressure figures on different speed rates, please consult the producer company.
- Our company is entitled to change any information in this brochure without prior notice.
- This brochure overrides any previous documents.
- All figures are for reference and our company cannot be deemed responsible for printing errors.
- The visual content of this brochure is only representative. To find the compatible tire for your vehicle, please refer to the vehicle service or authorized tire dealer.

RANGE OF PETLAS MILITARY & LIGHT TRUCK - TRUCK BUS BIAS TIRES

Military Land Vehicles



RM 910
Radial



RM 900
Radial



PT 451
EXPLERO
Radial



PT 461
EXPLERO
Radial



PM 40



PM 50



PN 30

Military Aircraft



MAIN



NOSE

Light Truck Bias



PD 30



PA 20



NB 37



PA 30

Truck Bus Bias



PD 40



PA 40



PA 80





petlas
TRACK OF TRUST

RM 910 Radial

It is a special Off-Road tire developed for military vehicles and specific usage purposes. RM 910 is also available to use in all kind of terrains and compatible for all axes. Thanks to its wide channel block structure provides ultimate grip and traction on all kind of surfaces, also effective mud discharge. Offer longevity through special tread compound.



**M+S
P.O.R.**



■ ALL SIZES

395/85 R20 TL		168G
335/80 R20 TL	MPT	146M
365/80 R20 TL	MPT	152K
16.00 R20		173/170G
335/80 R20 TL	MPT	149 K
365/80 R20 TL	MPT	154 K
365/85 R20 TL		164 J
395/85 R20 TL		168 K



MILITARY LAND VEHICLES

RM 900 Radial

Deep channels between the blocks effectively evacuate mud and snow and provide perfect traction. The bonds between the blocks give resistance to tears and wears and the compound enable long service life. Special block type tread structure design to military purposes provides ultimate grip in off-road conditions even on muddy, sandy, rocky and icy roads.



**M+S
P.O.R.**



■ SIZE

14.00R 20 TL 22PR 164/160G

14.00R 20 TL 18PR 160/158G



petlas

PT451 EXPLERO Radial

Ultimate traction on difficult conditions. Special compound and structure on bead, reinforced plies on the tread part provide perfect durability. Available for use with Run Flat apparatus. Optimal space between blocks provides discharge of mud and snow effectively.

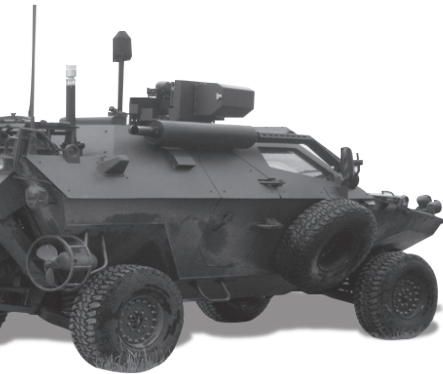


M+S



■ ALL SIZES

37X12.50 R	16.5LT	TL	127N
37X12.50 R	16.5LT	TL	133N
235/85R	16	TL	120Q



MILITARY LAND VEHICLES

PT461 EXPLERO Radial

Thanks to reinforced and separated shoulder block structure PT461 offers perfect traction on soft soil, muddy and snowy surfaces. With special design bead structure and three steel belted tread, PT461 is durable against cuts and wears. New generation carcass ply cords offers durability and balanced driving.



M+S



■ ALL SIZES

7.50 R16C TL 116/114N



petlas

PM 40

The tread pattern of this tire provides excellent traction in both forward and reverse direction. Its powerful nylon body protects the tire and provides long life. Ideal for on/off road applications at all weather conditions and suitable for retreading.



M+S



■ ALL SIZES

14.00-20 TT 18PR 160/157F

14.00-20 TT 20PR 161/158F



MILITARY LAND VEHICLES

PM 50

Its powerful and densely arranged tread pattern configuration prevents damages under difficult terrain conditions. Provides exceptional grip under all kinds of road conditions that require perfect traction.



M+S



■ ALL SIZES

12.5-20	TT	12PR	132F
12.5-20	TL	12PR	132F



petlas

PN 30

The tread pattern is durable against wear and damage. Its powerful nylon body protects the tire and provides long life. These are the tires that have been developed for special military land vehicles and for all kinds of pavement conditions.



M+S



■ ALL SIZES

13.00 - 18 TT/TL 8PR 131F

13.00 - 18 TT 10PR 135G



Military Purpose Tires



petlas

MAIN

Tires used under the main body of military aircrafts. T37, T38, F104, F5, F4, F16 and CN-235



■ ALL SIZES

20X4.4-12	TL	12PR	T37 MAIN
20X4.4-12	TL	14PR	T38 MAIN
22X8.5-11	TL	16PR	F5 MAIN
26X8.0-14	TL	16PR	F104 MAIN
27.75X8.75-14.5	TL	24PR	F16 BLOCK 40/50 MAIN
30X11.5-14-5	TL	24PR	F4 MAIN
30X11.5-14-5	TL	26PR	F4 MAIN
11.00-12	TL	10PR	CN-235 MAIN



NOSE

Tires used under the nose of military aircrafts. T37, F4, F16, F104, F5, C 130 and CN-235



■ ALL SIZES

12.5-16	TL	12PR	C130 NOSE
16X4.4	TT	6PR	T37 NOSE
18X5.5	TL	14PR	F4 NOSE
18X5.7-8	TL	18PR	F16 NOSE
18X6.5-8	TL	12PR	F5 NOSE
8.50-10	TL	12PR	CN-235 NOSE



PD30

PD 30 is a bias tire suitable to use in standard conditions. High resistance against cuts and tread wears with special deep geometry design.



■ ALL SIZES

6.50-16C	TT	10PR	108/107L
6.50-16C	TL	10PR	108/107L
7.00-16C	TT	10PR	113/112L
7.50-15C	TT	10PR	114/112L
7.50-16C	TT	14PR	122/121J



LIGHT TRUCK BIAS

PA 20

Traction type tire with heavy load capacity for short distance roads. High resistance against cuts and wears with special deep geometry design. Durable nylon carcass structure.



M+S



■ ALL SIZES

7.50-15C	TT	10PR	114/112L
8.25-20		14 PR	133/A6



NB 37

Traction type tire with heavy load capacity for short distance roads. Durable nylon carcass structure provides longevity. High resistance against cuts and wears.



M+S



■ ALL SIZES

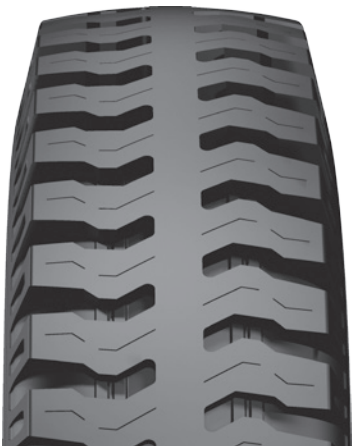
6.50-16C	TT	10PR	108/107L
7.50-16C	TT	10PR	116/114L
7.50-16	TT	12PR	121/120J



LIGHT TRUCK BIAS

PA 30

Traction type tire with heavy load capacity for short distance roads. High resistance against cuts and wears with special deep geometry design. Durable nylon carcass structure.



M+S



■ ALL SIZES

7.50-16C	TT	12PR	121/120J
7.50-16C	TT	14PR	122/121J



PD 40

PD 40 is a steer axle bias tire suitable to use in standart conditions. It provides balanced driving thanks to its specially tread design for steer axles. Offers longevity, ultimate grip and traction through wide base modern tread design and nylon cord structure.



■ ALL SIZES

9.00-20	TT	14PR	140/137 J
10.00-20	TT	16PR	146/143 J
11.00-20	TT	16PR	149/145 J
12.00-20	TT	18PR	154/149 J
12.00-24	TT	18PR	156/153 J



PA 40

PA 40 is a steer axle bias tire suitable to use in standart conditions. Also highly resistant to cut and wears. Offers longevity thanks to its strong carcass structure, tread geometry, specially developed tread composition. PA40 provides ultimate load capacity and self-cleaning.



M+S



■ ALL SIZES

9.00-20	TT	14PR	140/137 J
10.00-20	TT	16PR	146/143 J
11.00-20	TT	16PR	149/145 J
12.00-20	TT	18PR	154/149 J
12.00-24	TT	18PR	156/153 J



PA 80

The wide base provides long life, traction and road holding capability. It is durable and has long life due to its powerful nylon cord body. The special shoulder design not only makes it suitable to be used on both the front and rear axles but also avoids irregular wear.



M+S



■ SIZE

12.00-20	TT	18PR	154/149 J
----------	----	------	-----------



Petlas Military & LTB - TBB tires are characterized by quality workmanship, leading edge technology, unique tread designs and excellent performance offering perfect mix of quality and value.

Our success depends on exceeding the expectations of our customers and standing behind everything we do.

Our aim is to build long term relationships with our customers by providing excellent service, quality and delivering our promises.



petlas
TRACK OF TRUST

2020 EDITION



petlas

Headquarters - Factory

Petlas Tire Industry and Trade
Kindam Mahallesi Ankara-Kayseri Caddesi
No: 2/1 Kırşehir / TÜRKİYE
T.+90 386 252 65 50 F.+90 386 252 65 70

Int. Sales & Marketing

Petlas Tire Industry and Trade
Ako Kule, Söğütözü Mh. 2178. Cd. No: 6
06530 Ankara / TÜRKİYE
T. +90 312 309 30 30 • F.+90 312 310 95 09

Petlas Tire USA

1111 E. Lincolnway STE 205
Cheyenne, WY 82001 USA

www.petlas.com

MADE IN TÜRKİYE