



# AGRICULTURAL TIRES



**petlas**  
TRACK OF TRUST

[www.petlas.com](http://www.petlas.com)  
[www.petlastires.com](http://www.petlastires.com)  
Made in TÜRKİYE

#### Headquarters - Factory

Petlas Tire Industry and Trade  
Kındam Mahallesi Ankara - Kayseri Caddesi  
No: 2/1 Kırşehir / TÜRKİYE  
T: +90 386 252 65 50 - F: +90 386 252 65 70

#### Int. Sales & Marketing

Petlas Tire Industry and Trade Ako Kule  
Söğütözü Mh. 2178. Cd. No: 6  
06530 Ankara/TÜRKİYE  
T: +90 312 309 30 30 - F: +90 312 309 22 66

#### Petlas Tire USA

1111 E. Lincolnway STE 205  
Cheyenne, WY 82001 USA



# RANGE OF PETLAS AGRICULTURAL TIRES

## TRACTOR FRONT



TD 16

TD 17

TD 18

TP 8

TD 25

TD 35



TA 50

TA 60

## TRACTOR REAR



TA 60

TZ 13

TA 300

TA 330

## TRACTOR RADIAL



TA 110

TA 110 PLUS

TA 120 ROW CROP

TA 130

TA 130 PLUS

TA 130 IF Series

## IRRIGATION



P-IRG 80

## TRAILER/IMPLEMENT



TA 60

VF HLT 45

NT 3

NT 30

PA 20

NB 27



NB 37

UN 1 (3 RIB)

UN 1 (5 RIB)

UN 3

UN 4

UN 5



UN 7

UN 9

UN 11

STB 3

PA 30

## RADIAL HARVESTER/HARVESTER



TA 130 AGROPER

PB 140 AGROPER

UN 9

BD 60

BD 65

TA 330

UN 1 (5 RIB)

## FLOTATION/FORESTRY



IMF 18

IMT 18

IMT 08

PT-FLOT

PT-HAUL

## TD 16

**Front tire for 2WD tractors appropriate for using on field and short distance road operations**

Offers long life thanks to its wear-resistant tread compound. Durable shoulders protect the tire effectively by increasing its resistance to any kind of damage. Special tread design keeps the tread free of mud.



TYRE SIZE	PR	TT/TL	LOAD/SPEED INDEX
5.50-16	6	TT	86/A6
6.00-16	6	TT	88/A6
6.50-16	6	TT	91/A6
6.50-16	8	TT	97/A6
7.50-16	6	TT	98/A6
7.50-16	8	TT	103/A6
6.00-19	6	TT	93/A6
6.50-20	8	TT	108/A6
6.50-20	10	TT	115/A6
7.50-20	8	TT	108/A6
7.50-20	10	TT	115/A6



## TD 17

### Ideal 2WD tractor front tire with special 3Rib design

The rib design provides ultimate steering performance during soil tillage operations and on soft and cultivated areas. Specially formulated tread compound and all steel carcass structure offer longevity. Flexible carcass structure prevents sinking. Special tread design provides efficient self-cleaning feature.



TYRE SIZE	PR	TT/TL	LOAD/SPEED INDEX
6.00-16	6	TT	88A6
6.00-16	8	TL	94A6
7.50-16	8	TT	103A6
7.50-16	8	TL	103A6
9.00-16	8	TT	111A6
11.00-16	8	TT	118A6



# TD 18

**Front tire for 2WD tractors suitable to be used on field and short distance road operations**

Improved tread compound enable high resistance against wears and cuts. Strong center and shoulder design improves durability towards side impacts and tread base fatigue. Tread pattern and flexible carcass structure provide excellent maneuverability without sinking into the soil. Special tread geometry provides easy steering.



TYRE SIZE	PR	TT/TL	LOAD/SPEED INDEX
6.50-16	6	TT	91/A6
6.50-16	8	TT	97/A6
7.50-18	8	TT	106/A6
7.50-20	8	TT	108/A6



## TP 8

**Front tire for 2WD tractors suitable to be used on field and short distance road operations**

Improved tread compound enable high resistance against wears and cuts. Strong center and shoulder design provides high resistance to side impacts and tread base fatigue. Tread pattern and flexible carcass structure provide excellent maneuverability without sinking into the soil. Special tread geometry provides easy steering.



TYRE SIZE	PR	TT/TL	LOAD/SPEED INDEX
6.00-16	6	TT	88/A6
7.50-16	8	TT	103/A6



# TD 25

**Front tire for 2WD tractors suitable to be used on field and short distance road operations**

Solid tread center structure and strong nylon carcass enhances durability. Durable shoulders protect the tire effectively by increasing its resistance to any kind of damage. The strong and flexible carcass structure that prevents sinking into the soil also ensures long life.



TYRE SIZE	PR	TT/TL	LOAD/SPEED INDEX
6.00-16	6	TT	88/A6
6.00-16	10	TT	98/A6
6.50-16	6	TT	91/A6
6.50-16	8	TT	97/A6
7.50-16	8	TT	103/A6



## TD 35

### Ideal 2WD tractor front tire with special 3Rib design

The rib design provides ultimate steering performance during soil tillage operations and on soft and cultivated areas. Specially formulated tread compound and all steel carcass structure offer longevity. Flexible carcass structure prevents sinking into the soil. Special tread design provides efficient self-cleaning feature.



TYRE SIZE	PR	TT/TL	LOAD/SPEED INDEX
10.00-16	8	TT	114/A6



# TA 50

## High traction R-1 tractor front tire for medium and low powered tractors

Wide and strong body provides easy grip and high traction. Tread profile provides outstanding durability to tread base fatigue. Highly resistant to cuts and wears. Offers effective self-cleaning feature and grip performance during tillage operations by its special tread geometry.



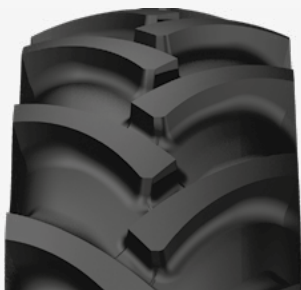
TYRE SIZE	PR	TT/TL	LOAD/SPEED INDEX
6.5/80-12	6	TL	80/A6
6.5/80-13	6	TT	94/A6



## TA 60

### High traction R-1 tractor front tire for medium and low powered tractors

Offers long service life thanks to its wear resistant tread compound. Tread profile enables high resistance to tread base fatigue. The wide and long lugs provide comfortable drive while improving grip performance. Wide and strong body ensures ultimate grip and high traction. Special tread geometry offers efficient self-cleaning feature.

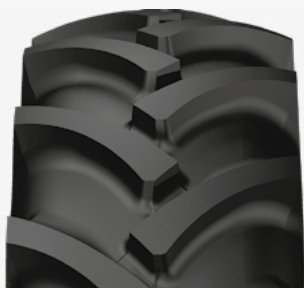


TYRE SIZE	PR	TT/TL	LOAD/SPEED INDEX
5.00-10	4	TT	70-58/A6
5.00-12	4	TT	62/A6
6.5/80-12	6	TT	80/A6
7.00-12	6	TT	83/A6
10.0/80-12	6	TT	98/A6
10.0/80-12	6	TL	98/A6
5.00-15	6	TT	88/A6
6.5/80-15	6	TT	98/A6
6.00-16	6	TT	88/A6
6.50-16	6	TT	91/A6
7.50-16	8	TT	103/A6
7.00-18	8	TT	106/A6
7.50-18	8	TT	106/A6
7.50-20	8	TT	108/A6
8.00-20	8	TT	113/A6
9.50-20	8	TT	107/A6

## TA 60

### High traction R-1 tractor rear tire for medium and low powered tractors

The wide and long lugs provide comfortable drive while improving grip performance. Offers long service life thanks to its wear resistant tread compound. Wide and strong body provides ultimate grip and high traction. Tread profile enables high resistance to tread base fatigue. Special tread geometry provides efficient self-cleaning feature.



TYRE SIZE	PR	TT/TL	LOAD/SPEED INDEX
8.3-24	8	TT	108A6
9.5-24	8	TT	112A6
9.5-24	8	TL	112A6
11.2-24	8	TT	116A6
11.2-24	8	TL	116A6
11.2-28	8	TT	118A6
11.2-28	8	TL	118A6
14.9-24	4	TL	112A6
14.9-24	4	TT	112A6
14.9-24	6	TT	123A6
14.9-24	8	TT	128A6
14.9/13-24	8	TL	128A6
14.9-24	10	TT	134A6
14.9-24	14	TT	142A6
14.9-24	14	TL	142A6
12.4-24	6	TT	115A6
12.4-24	8	TT	120A6
12.4/11-24	8	TL	120A6
12.4-24	12	TT	128A6
13.6-24	8	TT	123A6
13.6/12-24	8	TL	123A6
18.4-26	12	TT	146A6
18.4-26	14	TT	149A6
18.4-26	12	TL	146A6
12.4-28	6	TT	117A6
12.4-28	8	TT	122A6
12.4/11-28	8	TL	122A6
13.6-28	6	TT	121A6
13.6-28	8	TT	125A6
14.9-28	6	TT	125A6

# TRACTOR REAR

TYRE SIZE	PR	TT/TL	LOAD/SPEED INDEX
14.9-28	8	TT	130A6
14.9/13-28	8	TL	130A6
16.9-28	8	TT	135A6
16.9/14-28	8	TL	135A6
16.9-28	10	TT	139A6
16.9-28	12	TT	143A6
16.9-28	14	TT	145A8
14.9-30	8	TT	131A6
14.9-30	10	TT	135A6
16.9-30	8	TT	137A6
16.9/14-30	8	TL	137A6
16.9-30	10	TT	139A6
16.9-30	12	TT	143A6
16.9-30	14	TT	144A6
18.4-30	6	TT	134A6
18.4-30	8	TT	139A6
18.4/15-30	8	TL	139A6
18.4-30	10	TT	145A6
18.4-30	12	TT	149A6
18.4-30	14	TT	151A6
12.4-32	8	TT	124A6
16.9-34	8	TT	139A6
16.9-34	10	TT	142A6
16.9-34	12	TT	145A6
16.9-34	14	TT	148A6
18.4-34	8	TT	141A6
18.4-34	10	TT	146A6
18.4-34	12	TT	151A6
18.4-34	14	TT	156A6
18.4/15-34	8	TL	141A6
12.4-36	8	TT	126A6
12.4-36	14	TT	139A6
13.6-36	6	TT	125A6
13.6-36	8	TT	129A6
13.6-38	8	TT	131A6
13.6-38	14	TT	142A6
14.00-38	8	TT	131A6
14.00-38	10	TT	136A6
15.5-38	8	TT	133A6
15.5-38	8	TL	133A6
15.5-38	10	TT	138A6
15.5-38	12	TT	142A6
15.5-38	14	TT	145A6
16.9-38	8	TT	141A6
16.9-38	10	TT	144A6
16.9-38	12	TT	142A6
18.4-38	8	TT	143A6
18.4-38	10	TT	147A6
18.4-38	10	TL	147A6
18.4-38	14	TT	155A8
15.5/80-24	12	TL	157/145A8
15.5/80-24	16	TL	163/151A8



## TZ 13

### Tractor rear tire for field operations

Strong nylon carcass structure provides optimum durability. Resistant to cuts and wears thanks to its special compound. High lugs provide excellent traction at all operating conditions. Offers safe handling on steep or hilly grounds.



TYRE SIZE	PR	TT/TL	LOAD/SPEED INDEX
12.4/28	8	TT	122/A6
16.9/30	10	TT	139/A6
16.9/30	12	TT	144/A6



# TA 300

## R-1 tractor rear tire

Special lug design provides maximum traction while simultaneously offering excellent self-cleaning feature. Strong nylon carcass structure provides optimum durability. Open center pattern ensures high resistance to tread base fatigue. Resistant to cuts and wears thanks to its special compound. Ensures handling stability on steep or hilly grounds.



TYRE SIZE	PR	TT/TL	LOAD/SPEED INDEX
9.5-24	8	TT	112/A6
11.2-24	8	TT	116/A6
12.4/24	8	TT	120/A6
12.4/24	10	TT	124/A6
13.6/24	8	TT	123/A6
14.9/24	8	TT	128/A6
12.4/28	8	TT	122/A6
13.6/28	8	TT	125/A6
14.9/28	8	TT	130/A6
14.9/30	8	TT	131/A6
16.9/30	10	TT	139/A6
18.4/30	8	TT	139/A6
18.4/30	10	TT	145/A6
18.4/30	12	TT	149/A6
18.4/30	14	TT	151/A6
16.9/34	8	TT	139/A6
18.4/34	8	TT	141/A6
12.4/36	8	TT	126/A6
13.6/36	8	TT	129/A6
16.9/38	8	TT	141/A6

## TA 330

### R-1 tractor rear tire

Provides superior performance on tough terrains with its specially designed tread pattern. The unique lug design prevents any kind of crop damage and provides easy cleaning feature during field operations. Wide and reinforced body provides perfect grip, high traction and reduced slippage. Exceptional carcass structure provides optimum durability. Tread profile with extra wide tread base ensures perfect resistance to tread base fatigue.



TYRE SIZE	PR	TT/TL	LOAD/SPEED INDEX
<b>30.5L-32</b>	12	TL	158/A8
<b>30.5L-32</b>	18	TL	170/A6*

\*Harvester Use



## TA 110

### General purpose R-1W tractor radial tire

Wider footprint offers lower soil compaction. Special structure improves flotation on soft terrains and ensures a comfortable ride at all operating conditions. Low rolling resistance leads to maximum fuel efficiency. Unique tread design provides exceptional traction and ensures maximum performance. Special tread compound provides high level of resistance against wear and cuts. Tread profile enhances durability to tread base fatigue. Offers excellent self-cleaning feature.



RADIAL



TYRE SIZE	TT/TL	LOAD/SPEED INDEX
9.5 R20	TL	108A8/105B
9.5 R24	TL	109A8/109B
280/85 R20 (11.2 R20)	TL	112A8/109B
320/85 R20 (12.4 R20)	TL	119A8/116B
280/85 R24 (11.2 R24)	TL	115A8/112B
320/85 R24 (12.4 R24)	TL	122A8/122B
340/85 R24 (13.6 R24)	TL	125A8/125B
380/85 R24 (14.9 R24)	TL	131A8/131B
420/85 R24 (16.9 R24)	TL	137A8/137B
280/85 R28 (11.2 R28)	TL	118A8/118B
320/85 R28 (12.4 R28)	TL	124A8/124B
340/85 R28 (13.6 R28)	TL	127A8/127B
380/85 R28 (14.9 R28)	TL	133A8/133B
420/85 R28 (16.9 R28)	TL	139A8/139B
380/85 R30 (14.9 R30)	TL	135A8/135B
420/85 R30 (16.9 R30)	TL	140A8/140B
460/85 R30 (18.4 R30)	TL	145A8/145B
320/85 R32 (12.4 R32)	TL	126A8/126B
380/85 R34 (14.9 R34)	TL	137A8/137B
420/85 R34 (16.9 R34)	TL	142A8/142B
460/85 R34 (18.4 R34)	TL	147A8/144B
320/85 R36 (12.4 R36)	TL	128A8/125B
340/85 R36 (13.6 R36)	TL	132A8/132B
320/85 R38 (12.4 R38)	TL	143A8/143B
340/85 R38 (13.6 R38)	TL	133A8/130B
380/85 R38 (14.9 R38)	TL	139A8/139B
420/85 R38 (16.9 R38)	TL	144A8/144B
460/85 R38 (18.4 R38)	TL	149A8/146B

# TRACTOR RADIAL

TYRE SIZE		TT/TL	LOAD/SPEED INDEX
460/85	R38 (18.4 R38) RF	TL	149A8/149B
520/85	R38 (20.8 R38)	TL	155A8/152B
520/85	R38 (20.8 R38) RF	TL	172A8/172B
520/85	R42 (20.8 R42)	TL	157A8/157B
520/85	R42 (20.8 R42) RF	TL	162A8/162B
VF520/85	R42 (20.8 R42) RF	TL	174D/177A8
520/85	R46 (20.8 R46)	TL	158A8/155B
VF520/85	R46 (20.8 R46)	TL	170D
260/80	R20 (8.00 R20)	TL	106A8/103B
480/80	R38 (18.4 R38)	TL	149A8/149B
480/80	R42 (18.4 R42)	TL	151A8/151B
VF480/80	R42 (18.4 R42)	TL	162D
480/80	R46 (18.4 R46)	TL	158A8/158B
VF480/80	R46 (18.4 R46)	TL	177D
480/80	R50 (18.4 R50)	TL	159A8/159B
VF480/80	R50 (18.4 R50)	TL	179D
200/70	R16	TL	94A8/94B
240/70	R16 (6.00 R16)	TL	104A8/101B
260/70	R16 (6.50 R16)	TL	109A8/106B
280/70	R16 (7.50 R16)	TL	112A8/112B
280/70	R18 (7.50 R18)	TL	114A8/114B
260/70	R20 (6.50 R20)	TL	113A8/113B
280/70	R20 (7.50 R20)	TL	116A8/116B
300/70	R20 (9.50 R20)	TL	120A8/120B
320/70	R20 (11.2 R20)	TL	123A8/123B
360/70	R20 (12.4 R20)	TL	129A8/129B
380/70	R20 (13.6 R20)	TL	132A8/132B
320/70	R24 (11.2 R24)	TL	116D
360/70	R24 (12.4 R24)	TL	122D
380/70	R24 (13.6 R24)	TL	125D
420/70	R24 (14.9 R24)	TL	130D/133A8
480/70	R24 (16.9 R24)	TL	138D
480/70	R26 (16.9 R26)	TL	139A8/136B
320/70	R28 (11.2 R28)	TL	119A8/119B
360/70	R28 (12.4 R28)	TL	125D
380/70	R28 (13.6 R28)	TL	127D
420/70	R28 (14.9 R28)	TL	133D
480/70	R28 (16.9 R28)	TL	140D
420/70	R30 (14.9 R30)	TL	134D
480/70	R30 (16.9 R30)	TL	141D
520/70	R30 (18.4 R30)	TL	145A8/142B
480/70	R34 (16.9 R34)	TL	149D
520/70	R34 (18.4 R34)	TL	148D
480/70	R38 (16.9 R38)	TL	145D
520/70	R38 (18.4 R38)	TL	150D
580/70	R38 (20.8 R38)	TL	155D
580/70	R42 (20.8 R42)	TL	158D/161A8
420/65	R24 (12.4 R24)	TL	138D/141A8
440/65	R24 (13.6 R24)	TL	135D/138A8
480/65	R24 (14.9 R24)	TL	140D/143A8
540/65	R24 (16.9 R24)	TL	146D/149A8
440/65	R28 (13.6 R28)	TL	138D/141A8
480/65	R28 (14.9 R28)	TL	142D/145A8
540/65	R28 (16.9 R28)	TL	149D/152A8
540/65	R30 (16.9 R30)	TL	150D/153A8
540/65	R34 (16.9 R34)	TL	152D/155A8
600/65	R34 (18.4 R34)	TL	157D/160A8
540/65	R38 (16.9 R38)	TL	153D/156A8
600/65	R38 (18.4 R38)	TL	159D/162A8

RF : Reinforced

VF : Very High Flexion

# TA 110 PLUS

**Resistance against wear and cracks due to its more robust structure in the tread grooves and its unique mixture**

Special tread geometry improves traction and reduces slipping, resulting in significant fuel savings. Provides excellent traction with optimized pattern of angles on the tread.



RADIAL



TYRE SIZE	TT/TL	LOAD/SPEED INDEX
650/85 R38	TL	173D
650/65 R38	TL	171D/174A8
650/65 R38	TL	163D/166A8



# TA 120

## General purpose R-1W row crop tractor and sprayer tire

Narrow profile protects the crop from damages. Robust carcass structure enables maximum performance under heavy loads. Deep lugs and special tread compound ensure longevity. Special tread compound provides high resistance against wear and cuts. Tread design enhances self-cleaning capability and reduces slippage.

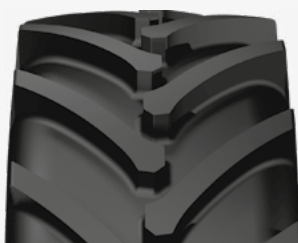


TYRE SIZE		TT/TL	LOAD/SPEED INDEX
210/95	R32 (8.3 R32)	TL	120A8/120B
230/95	R32 (9.5 R32)	TL	128D/131A8
270/95	R32 (11.2 R32)	TL	136A8/136B
210/95	R36 (8.3 R36)	TL	118D/121A8
230/95	R36 (9.5 R36)	TL	130D/133A8
270/95	R36	TL	139A8/136D
270/95	R38 (11.2 R38)	TL	140A8/140B
230/95	R40 (9.5 R40)	TL	132D/135A8
230 / 95	R42	TL	136A8/133D
210/95	R44 (8.3 R44)	TL	120A8/120B
230/95	R44 (9.5 R44)	TL	132A8/132B
270/95	R44 (11.2 R44)	TL	142A8/142B
270/95	R46	TL	144A8/141D
300/95	R46 (12.4 R46)	TL	148A8/148B
230/95	R48 (9.5 R48)	TL	136D/139A8
270/95	R48 (11.2 R48)	TL	144A8/144B
300/95	R52 (12.4 R52)	TL	156D/159A8
270/95	R54 (11.2 R54)	TL	146D/149A8
VF320/90	R46	TL	165D
380/90	R46	TL	159D/162A8
VF380/90	R46	TL	173D
340/85	R46	TL	153A8/150D
340/85	R48	TL	151D/154A8
VF320/90	R54	TL	168D

# TA 130

## R-1W tire for high power tractors

Designed to transfer torque power to the ground effectively on any terrain. Special tread geometry reduces slippage by improving traction which in turn, leads to significant fuel savings. Wider footprint and optimized lug angle contributes to crop productivity by minimizing soil compaction. Elastic structure absorbs impacts and demonstrates better flotation. Strong carcass and high-quality tread compound ensure longer service life and enable maximum performance under heavy loads. Provides driving comfort both on the road and the field.



RADIAL



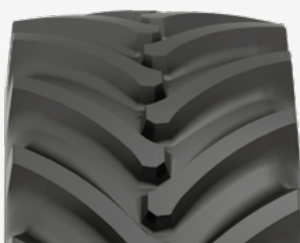
TYRE SIZE	TT/TL	LOAD/SPEED INDEX
600/70 R28	TL	161D
600/70 R30	TL	158D
600/70 R34	TL	160D
800/70 R38	TL	178D/181A8
620/70 R42	TL	166D
600/65 R28 (18.4 R28)	TL	154D/157A8
600/65 R42 (18.4 R42)	TL	154D/157A8



# TA 130 PLUS

## R-1W tire for high power tractors

Designed to transfer torque power to the ground effectively on any terrain. Special tread geometry reduces slippage by improving traction which in turn, leads to significant fuel savings. Wider footprint and optimized lug angle contributes to crop productivity by minimizing soil compaction. Elastic structure absorbs impacts and demonstrates better flotation. Strong carcass and high-quality tread compound ensure longer service life and enable maximum performance under heavy loads. Provides driving comfort both on the road and the field.



RADIAL



TYRE SIZE		TT/TL	LOAD/SPEED INDEX
<b>VF710/75</b>	<b>R42</b>	TL	171D/174A8
<b>710/70</b>	<b>R38</b>	TL	173D/176A8
<b>710/70 R42</b>	<b>R42</b>	TL	185D
<b>VF710/70 R42</b>	<b>R42</b>	TL	170D/173A8
<b>VF650/65</b>	<b>R34</b>	TL	174D
<b>650/65 R42 (20.8 R42)</b>	<b>(20.8 R42)</b>	TL	183D
<b>VF650/65 R42</b>	<b>R42</b>	TL	174D
<b>VF710/60</b>	<b>R38</b>	TL	171D

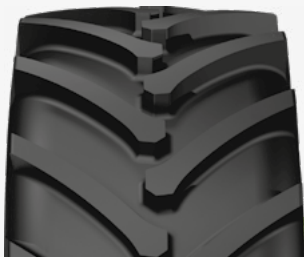
VF: Very High Flexion



## TA 130 IF Series

### R-1W tire for high power tractors

Demonstrates superior performance under heavy loads with lower pressure compared to traditional radial tires. Lower inflation pressure and sidewall flexibility improves driving comfort. Special tread design provides exceptional traction. Highly flexible sidewalls and large footprint offer lower soil compaction. Elastic structure effectively protects the tire by absorbing impacts. Strong carcass and special tread compound ensure longer service life.



RADIAL



TYRE SIZE

TT/TL

LOAD/SPEED INDEX

IF710/65 R46

TL

183D

IF: Increased Flexion



## P-IRG 80

### Pivot Irrigation Tire

It is a tire designed to be used in center pivot and linear irrigation systems. Its special tread pattern and width provide low soil compaction, which increases efficiency by protecting crops.



TYRE SIZE	PR	TT/TL	LOAD/SPEED INDEX
14.9/24	8	TT	128/A6
14.9/24	8	TL	128/A6
11.2-38	6	TT	117A6



# TA 60

## General purpose trailer tire

Offers long service life thanks to its wear resistant tread compound. Tread profile enables high resistance to tread base fatigue. The wide and long lugs provide comfortable drive while improving grip performance. Wide and strong body ensures ultimate grip and high traction. Special tread geometry offers efficient self-cleaning feature.



TYRE SIZE	PR	TT/TL	LOAD/SPEED INDEX
10.0/75-15.3	12	TT	114/A6
11.5/80-15.3	12	TL	123/A6
11.5/80-15.3	12	TT	123/A6



## VF HLT 45

### Multipurpose VF (Very High Flexion) all steel radial tire designed hold up to heavier loads

Thanks to VF technology, carries more load with equal pressure levels and same load with less pressure when compared to conventional tires. Tread compound provides resistance to cuts and wears on asphalt, hard soil and concrete roads. Wide footprint provides lower soil compaction. Protects crops effectively with the help of its high flexion feature. Special carcass structure offers high endurance against stubble impacts and fissures.



TYRE SIZE	PR	TT/TL	LOAD/SPEED INDEX
<b>VF285/70 R-19.5</b>	16	TL	152/D

VF: Very High Flexion



## NT 3

### Traction type trailer tire with high resistance

Suitable for transport and soil tillage operations. Special tread and carcass structure offers high load capacity. Wide and deeper tread design provides high resistance against cuts and tread fatigue.



TYRE SIZE	PR	TT/TL	LOAD/SPEED INDEX
9.00-16C	8	TT	119/117L
9.00-16	12	TL	125/A6
9.00-16	12	TT	125/A6
9.00-16	14	TT	128/A6
9.00-16	16	TT	131/A6
11.5/80-15.3	16	TL	141/A8



## NT 30

### Flexible and durable trailer tire

Special tread and carcass structure offers high load capacity on soft surfaces. Offers high resistance against cuts and stubble puncture thanks to its specially developed tread compound and geometry. Flexible carcass structure prevents sinking into the soil while protecting the tire by absorbing impacts.



TYRE SIZE	PR	TT/TL	LOAD/SPEED INDEX
9.00-16	12	TT	125/A6
9.00-16	14	TT	128/A6
9.00-16	16	TT	131/A6



# PA 20

## Traction type trailer tire

Suitable for short period transport along with field use. Special tread and carcass structure offer high load capacity. Offers high resistance against lug fatigue and tread wear thanks to its specially developed tread compound and geometry.



TYRE SIZE	PR	TT/TL	LOAD/SPEED INDEX
8.25-20	14	TT	133/A6



## NB 27

### Traction type trailer tire

Special tread and carcass structure offers high load capacity. Flexible carcass structure prevents sinking into the soil while protecting the tire by absorbing side impacts. Offers high resistance against lug fatigue and tread wear thanks to its specially developed tread compound and geometry.



TYRE SIZE	PR	TT/TL	LOAD/SPEED INDEX
9.00-20	14	TT	133/A6



# NB 37

## Traction type trailer tire with high resistance

Reinforced sidewalls provide durability and protect the tire from side impacts. Special tread depth and geometry offers high resistance to cuts and tread wear. Offers high load capacity and outstanding self-cleaning feature.



TYRE SIZE	PR	TT/TL	LOAD/SPEED INDEX
6.50 - 16C	10	TT	108/107J
7.50-16	12	TT	121/120J
7.50-16	12	TT	121/A6



## UN 1 (3 RIB)

The ideal trailer tire for high load capacity with minimum soil compaction

Offers high loading capacity with minimum soil compaction thanks to special three-rib tread design. Reinforced carcass structure ensures longevity by improving resistance against cuts and wears. Offers excellent self-cleaning features.



TYRE SIZE	PR	TT/TL	LOAD/SPEED INDEX
7.50-16	10	TT	116/A6



# UN 1 (5 RIB)

## Modern harvester and trailer tire

Demonstrates low dynamic rotating resistance thanks to its 5 Rib design. Suitable for short period transport and field use. Wide base area prevents slides to sides and sinking into the soil. Special tread design and structure ensures high resistance against cuts and wears.



TYRE SIZE	PR	TT/TL	LOAD/SPEED INDEX
11.5/80-15.3	12	TL	135/A8
11.5/80-15.3	12	TT	135/A6
11.5/80-15.3 RF*	12	TL	135/A8
11.5/80-15.3	14	TL	139/A8
12.5/80-15.3	12	TL	139/A8
12.5/80-15.3 RF*	12	TL	139/A8
12.5/80-15.3	16	TL	144/A8
10.5/80-18	14	TT	142/A8
12.5/80-18	14	TT	146/A8
10.0/75-15.3	10	TT	123/A8
10.0/75-15.3	14	TL	130/A8
10.0/75-15.3 RF	10	TL	123/A8
10.0/75-15.3 RF	12	TL	126/A8
10.5/65-16	10	TT	123/A8
13.0/65-18	14	TT	141/A8
400/60-15.5	14	TL	145/A8
400/60-15.5	16	TL	147/A8
340/55-16	12	TL	140/A8
15.0/55-17	14	TL	137/A8
500/50-17	14	TL	149/A8
19.0/45-17	12	TL	141/A8

RF: REINFORCED

## UN 3

### General purpose trailer tire

Provides high traction and leads to less soil compaction with its wide base area. Ensures perfect balance on soft terrains by preventing slide to sides. Offers resistance against cuts and wear with specially designed tread geometry. Special tread and carcass structure offers high load capacity.



TYRE SIZE	PR	TT/TL	LOAD/SPEED INDEX
<b>11.5/80-15.3 RF</b>	12	TL	137/A8
<b>12.5/80-15.3 RF</b>	12	TL	141/A8
<b>10.0/75-15.3 RF</b>	12	TL	126/A8
<b>260/70-15.3</b>	12	TL	126/A8

RF: REINFORCED



# UN 4

**Designed for small agricultural trailers, baling machines, and soil tillage equipment**

Providing smooth and reliable performance, UN-4 helps protect soil health by reducing compaction and ensuring gentle traction on the field. Built for efficiency, it delivers long-lasting durability and a cost-effective solution for farmers looking to maximize productivity with minimal impact on their land.



TYRE SIZE	PR	TT/TL	LOAD/SPEED INDEX
10.0/75-15.3 RF	10	TL	123/A8
10.0/75-15.3 RF	12	TL	126/A8
10.0/75-15.3	14	TL	130/A8



## UN 5

### General purpose trailer tire

Special tread and carcass structure offers high load capacity. Minimizes soil compaction with its wide base area, providing high traction on soft terrains. Ensures perfect balance on soft surfaces by preventing slides to sides. Offers high resistance against cuts and tread wear with unique tread geometry.



TYRE SIZE	PR	TT/TL	LOAD/SPEED INDEX
10.0/80-12	10	TT	122/A8
10.0/80-12	10	TL	122/A8



## UN 7

### Trailer tire designed for free rolling axle

Special Low Section Height profile design ensures high performance. Wide tread design provides high flotation capability. Offers heavy load capacity and long service life with its durable carcass structure design. Special tread compound provides outstanding resistance against stubble punctures and cuts.



TYRE SIZE	PR	TT/TL	LOAD/SPEED INDEX
9.5L-14SL	8	TL	111/B
9.5L-15SL	8	TT	112/B
9.5L-15SL	8	TL	112/B
9.5L-15SL	12	TL	121/B
11L-15SL	8	TL	113/B
11L-15SL	12	TL	121/B
12.5L-15SL	12	TL	127/B



# UN 9

## Trailer tire

Stable central tread section with open shoulder design enhances comfort and improves longevity. Low rolling resistance leads to maximum efficiency in fuel consumption. Strong sidewall construction and durable bead structure provides excellent protection against all kinds of damage. Offers excellent floatation and self-cleaning features.



TYRE SIZE	PR	TT/TL	LOAD/SPEED INDEX
16.0/70-20	14	TL	154A8/142A8
400/70-20	14	TL	154A8/142A8



## UN 11

### Free rolling tire designed to use on agricultural trailers and balers

Delivers outstanding durability feature even under low air pressure and heavy load with its strong carcass structure. Protect crops with low soil compaction feature. Offers excellent flotation as rounded shoulders and wider base spread load on the surface. Enables driving comfort and fuel efficiency. Delivers excellent self-cleaning capability thanks to its wide grooves.



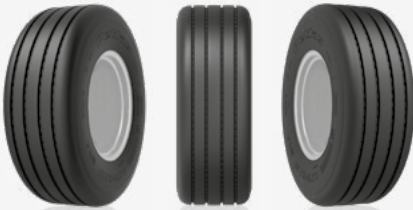
TYRE SIZE	PR	TT/TL	LOAD/SPEED INDEX
500/50-17	16	TL	152A8/139A8
500/50-17	18	TL	157A8/145A8



## STB 3

### Trailer tire designed for free rolling axle

Special tread compound provides excellent resistance against stubble punctures and cuts. Durable carcass structure improves longevity. Ensures high performance with its Low Section Height profile design. Delivers high flotation capability thanks to its wide tread design. Special carcass design supports heavy load capacity.



TYRE SIZE	PR	TT/TL	LOAD/SPEED INDEX
10.0/75-15.3	12	TL	126/A8



## PA 30

PA30 is a trailer implement tire that offers high performance on asphalt and soil thanks to its special skid resistant tread pattern. Reinforced carcass structure ensures longevity and superior carrying capacity.



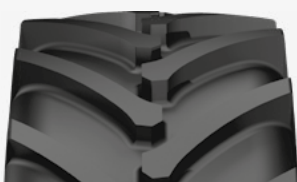
TYRE SIZE	PR	TT/TL	LOAD/SPEED INDEX
<b>7.50 - 16</b>	14	TT	122/121J
<b>7.50-16</b>	12	TT	121A6



## TA 130 AGROPER *Aramid Belted*

### R-1W Harvester tire with aramid belted structure

Aramid belt technology provides extra protection against stubble damage and ground impacts compared to steel and fabric alternatives. Reinforced bead structure ensures long life by improving the tire's endurance. Special tread design enables exceptional traction and better handling on the field. Wider footprint and optimized lug angle minimize soil compaction and avoid crop damage. Perfect performance under heavy loads with lower pressure compared to traditional radial tire construction. Elastic structure absorbs impacts and yields better flotation. Special tread compound offers high resistance against punctures.



TYRE SIZE	TT/TL	LOAD/SPEED INDEX
620/75 R26 (23.1 R26)*	TL	166/A8 166/B
620/75 R26 (23.1 R26)	TL	166/A8 166/B
620/75 R30 (23.1 R30)*	TL	169/A8 169/B
620/75 R30 (23.1 R30)	TL	169/A8 169/B
650/75 R32 (24.5 R32) RF	TL	172/A8 172/B
650/75 R32 (24.5 R32)	TL	172/A8 172/B
800/65 R32 (30.5 R32) RF	TL	178/A8 178/B
800/65 R32 (30.5 R32)	TL	178/A8 178/B

RF: Reinforced

\* : Aramid Belted



## PB 140 AGROPER

### Modern radial harvester tire

Offers outstanding traction on hard and soft terrains. Low rolling resistance feature improves efficiency in fuel consumption. Strong construction not only improves the tire's endurance, but also provides excellent performance. Offers high load capacity and minimum soil compaction. Special tread compound extends service life regardless of the softness or hardness of the ground.



TYRE SIZE

400/70 R20

TT/TL

TL

LOAD/SPEED INDEX

158A8/146A8



## UN 9

### Harvester rear and trailer tire

Stable central tread section with open shoulder design enhances comfort and improves longevity. Low rolling resistance leads to maximum efficiency in fuel consumption. Strong sidewall construction and durable bead structure provides excellent protection against all kinds of damage. Offers excellent flotation and self-cleaning features.



TYRE SIZE	PR	TT/TL	LOAD/SPEED INDEX
<b>16.0/70-20</b>	14	TL	154A8/142A8
<b>400/70-20</b>	14	TL	154A8/142A8



## BD 60

### Harvester tire

Offers maximum cost efficiency in terms of both field and road performance. Suitable for heavy duty operations without causing any damage to the crops. Offers outstanding comfort and excellent traction throughout its service life thanks to its aggressive lug design. Special tread compound and strong durable carcass structure provide high resistance against cuts and wears. Unique lug geometry keeps the tread pattern free from mud.



TYRE SIZE	PR	TT/TL	LOAD/SPEED INDEX
18.4/30	16	TT	153/A6



# BD 65

## Harvester tire

Strong carcass structure supports high load capacity. Unique lug design and geometry offer outstanding traction and selfcleaning features. Strong durable carcass structure and special tread compound improve resistance against cuts and wears.



TYRE SIZE	PR	TT/TL	LOAD/SPEED INDEX
23.1-26	12	TT	153/A6
23.1-26	14	TL	156/A6
23.1-26	18	TL	162/A6
23.1-30	14	TL	154/A6
23.1-30	12	TT	151/A6
23.1-30	18	TL	160/A6
20.8-38	14	TT	159/A6
20.8-38	14	TL	159/A6
20.8-38	16	TT	163/A6
20.8-38	16	TL	163/A6



## TA 330

### R-1 tire designed for harvester applications

Provides superior performance on tough terrains with its specially designed tread pattern. The unique lug design prevents any kind of crop damage and provides easy cleaning feature during field operations. Tread profile with extra wide tread base ensures perfect resistance to tread base fatigue. Wide and reinforced body provides perfect grip, high traction and reduced slippage.



TYRE SIZE	PR	TT/TL	LOAD/SPEED INDEX
<b>30.5L-32</b>	18	TL	170/A6



# UN 1 (5 RIB)

## Modern harvester tire

Demonstrates low dynamic rotating resistance thanks to its 5 Rib design. Suitable for short period transport and field use. Wide tread contact area prevents slides to sides and sinking into the soil. Special tread design and structure ensure high resistance against cuts and wears.



TYRE SIZE	PR	TT/TL	LOAD/SPEED INDEX
12.5/80-15.3	12	TL	139/A8
12.5/80-15.3	16	TL	144/A8



## IMF 18

### General purpose flotation tire

Non-aggressive pattern is designed to ensure perfect balance with excellent grip on even the softest terrains and offer larger footprint to minimize soil compaction. Strong tread and shoulder structure enable high load capacity. Special sidewall compound protects the tire by effectively absorbing side impacts.



TYRE SIZE	PR	TT/TL	LOAD/SPEED INDEX
12.5/80-15.3	16	TL	144/A8
12.5/80-15.3 RF	12	TL	141/A8
400/60-15.5	14	TL	145/A8
400/60-15.5	16	TL	152A6 / 148A8
400/60-15.5	18	TL	156A6 / 152A8
500/60-22.5	16	TL	163/A8 159/B
550/60-22.5	16	TL	167/A8 163/B
600/50-22.5	16	TL	165/A8 161/B

RF: REINFORCED



# PT-FLOT

## General purpose flotation tire

Flotation radial tyre designed to be used in agricultural vehicles, spreaders, tankers and trailers.



STEEL BELT



TYRE SIZE	TT/TL	LOAD/SPEED INDEX
560/60 R22.5	TL	165D
600/55 R26.5	TL	165D
650/55 R26.5	TL	169D
710/50 R26.5	TL	170D
560/45 R22.5	TL	152D



## PT-HAUL

### General purpose flotation tire

Flotation radial tyre designed to be used in agricultural vehicles, spreaders, tankers and trailers.



STEEL BELT



TYRE SIZE

560/60 R22.5

TT/TL

TL

LOAD/SPEED INDEX

165D/162E



# IMT 08

## General purpose forestry tire

Absorbs side impacts with its special sidewall compound and grips the soil perfectly, preventing slides to sides. Non-aggressive pattern is designed to ensure perfect balance with excellent grip on even the softest terrains and offer larger footprint to minimize soil compaction. Strong tread and shoulder structure enable high load capacity. Reinforced sidewall compound improves resistance against side impacts.



TYRE SIZE	PR	TT/TL	LOAD/SPEED INDEX
500/60-22.5	16	TL	159/A8 147/A8
550/60-22.5	16	TL	167/A8 155/A8
600/50-22.5	16	TL	156/A8 144/A8



## IMT 18

### General purpose forestry tire

Non-aggressive pattern is designed to ensure perfect balance with excellent grip on even the softest terrains and offer larger footprint which to minimize soil compaction and protect the crops. Reinforced tread and shoulder compound along with durable carcass structure enable high load capacity and improve durability for tough forest conditions. Special sidewall compound protects the tire by effectively absorbing side impacts.



TYRE SIZE	PR	TT/TL	LOAD/SPEED INDEX
400/60-15.5	18	TL	156/A6 / 152/A8
500/60-22.5	16	TL	163/A8 159/B 151/A8 148/B
550/60-22.5	16	TL	167/A8 163/B 154/A8 150/B
600/50-22.5	16	TL	165/A8 161/B 153/A8 149/B







#### DESCRIPTION

\* For load capacity and inflating pressure figures on different speed rates, please consult the producer company.

\*\* Load capacity on standard speed and standard load.

Our company is entitled to change any information in this brochure without prior notice. This brochure overrides any previous documents.

All figures are for reference and our company cannot be deemed responsible for printing errors.

\*\* The visual content of this brochure is only representative. To find the compatible tire for your vehicle, please refer to the vehicle service or authorized tire dealer.